

source: jesuits <http://www.catholic-hierarchy.org/diocese/dqsj0.html>
 salesians <http://www.catholic-hierarchy.org/diocese/dqsd0.html>
 OFM <http://www.catholic-hierarchy.org/diocese/dqofm.html>
 OFM Cap <http://www.catholic-hierarchy.org/diocese/dqfmc.html>
 Benedictine <http://www.catholic-hierarchy.org/diocese/dqosb.html>
 Dominicans <http://www.catholic-hierarchy.org/diocese/dqop0.html>
 FFI (1) <http://www.catholic-hierarchy.org/diocese/dqfi0.html>
 FFI (2) <http://www.libertaepersona.org/wordpress/2013/12/francescani-dellimmacolata-se-un-albero-da-frutto>
 FFI (3) http://en.wikipedia.org/wiki/Franciscan_Friars_of_the_Immaculate

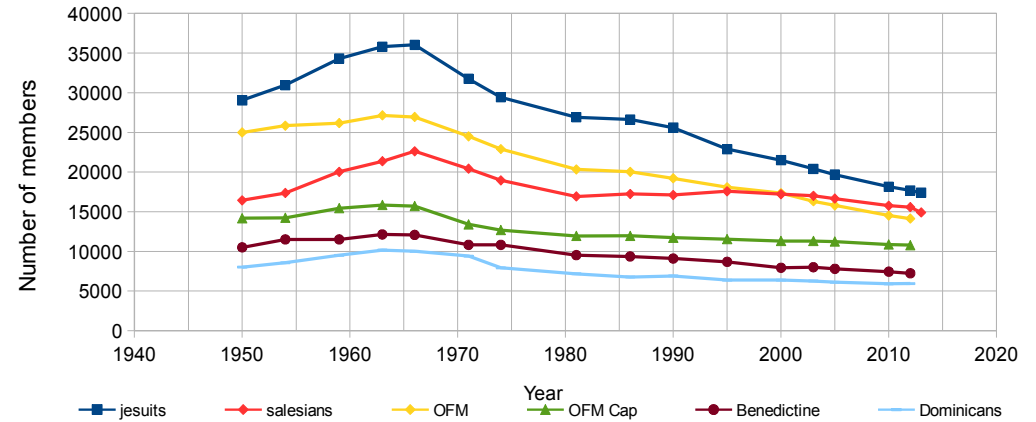
year	jesuits	salesians	OFM	OFM Cap	Benedictine	Dominicans	FFI
1950	29032	16430	24993	14175	10500	8000	
1954	30958	17356	25848	14225	11500	8560	
1959	34293	20031	26162	15442	11500	9508	
1963	35788	21355	27136	15849	12131	10150	
1966	36038	22626	26940	15710	12070	10003	
1971	31745	20423	24501	13403	10819	9399	
1974	29436	18959	22897	12688	10819	7922	
1981	26905	16915	20337	11944	9522	7164	
1986	26617	17233	20037	11953	9357	6769	
1990	25594	17107	19214	11717	9094	6899	
1995	22885	17567	18067	11538	8678	6375	
2000	21490	17192	17335	11303	7926	6371	
2003	20406	17000	16317	11302	7997	6262	
2005	19685	16645	15794	11229	7798	6109	
2010	18139	15763	14516	10865	7438	5906	
2012	17676	15573	14123	10786	7231	5932	366
2013	17380	14893					

year	jesuits	salesians	OFM	OFM Cap	Benedictine	Dominicans	FFI
1950	80,56%	72,62%	92,77%	90,23%	86,99%	79,98%	
1954	85,90%	76,71%	95,95%	90,55%	95,28%	85,57%	
1959	95,16%	88,53%	97,11%	98,29%	95,28%	95,05%	
1963	99,31%	94,38%	100,73%	100,88%	100,51%	101,47%	
1966	100,00%	100,00%	100,00%	100,00%	100,00%	100,00%	
1971	88,09%	90,26%	90,95%	85,32%	89,64%	93,96%	
1974	81,68%	83,79%	84,99%	80,76%	89,64%	79,20%	
1981	74,66%	74,76%	75,49%	76,03%	78,89%	71,62%	
1986	73,86%	76,16%	74,38%	76,09%	77,52%	67,67%	
1990	71,02%	75,61%	71,32%	74,58%	75,34%	68,97%	
1995	63,50%	77,64%	67,06%	73,44%	71,90%	63,73%	
2000	59,63%	75,98%	64,35%	71,95%	65,67%	63,69%	
2003	56,62%	75,13%	60,57%	71,94%	66,26%	62,60%	
2005	54,62%	73,57%	58,63%	71,48%	64,61%	61,07%	
2010	50,33%	69,67%	53,88%	69,16%	61,62%	59,04%	
2012	49,05%	68,83%	52,42%	68,66%	59,91%	59,30%	
2013	48,23%	65,82%					

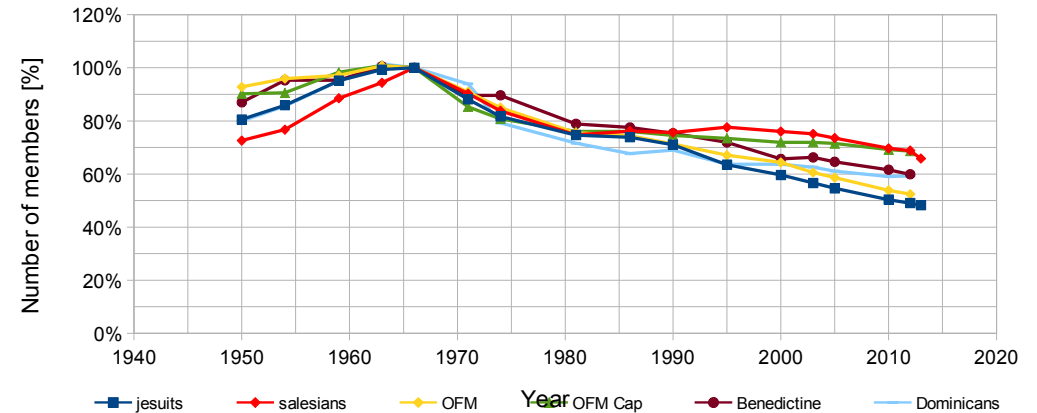
FFI	Year	Members	Percentage	Notes
	1950			
	1970	2	0,66%	
	1990	30	9,84%	
	2002	270	88,52%	
	2007	305	100,00%	In 2007: Motu Proprio Summorum Pontificum
	2008	324	106,23%	In 2008: decision for free choice on "Novus" or "Vetus" ordo
	2009	349	114,43%	
	2010	352	115,41%	
	2011	366	120,00%	In 2011: 5 friars signed for an Apostolic Visitor
	2012	384	125,90%	In 2012: 21 friars should be against the "Vetus" ordo
			62,50%	In 2012: 240 friars asking for a PCED religious group

Update 2014.02.12

development of several Religious Orders (absolute data)



development of several Religious orders (relative data; 1966=100%)



development of the Franciscan Friars of the Immaculata

